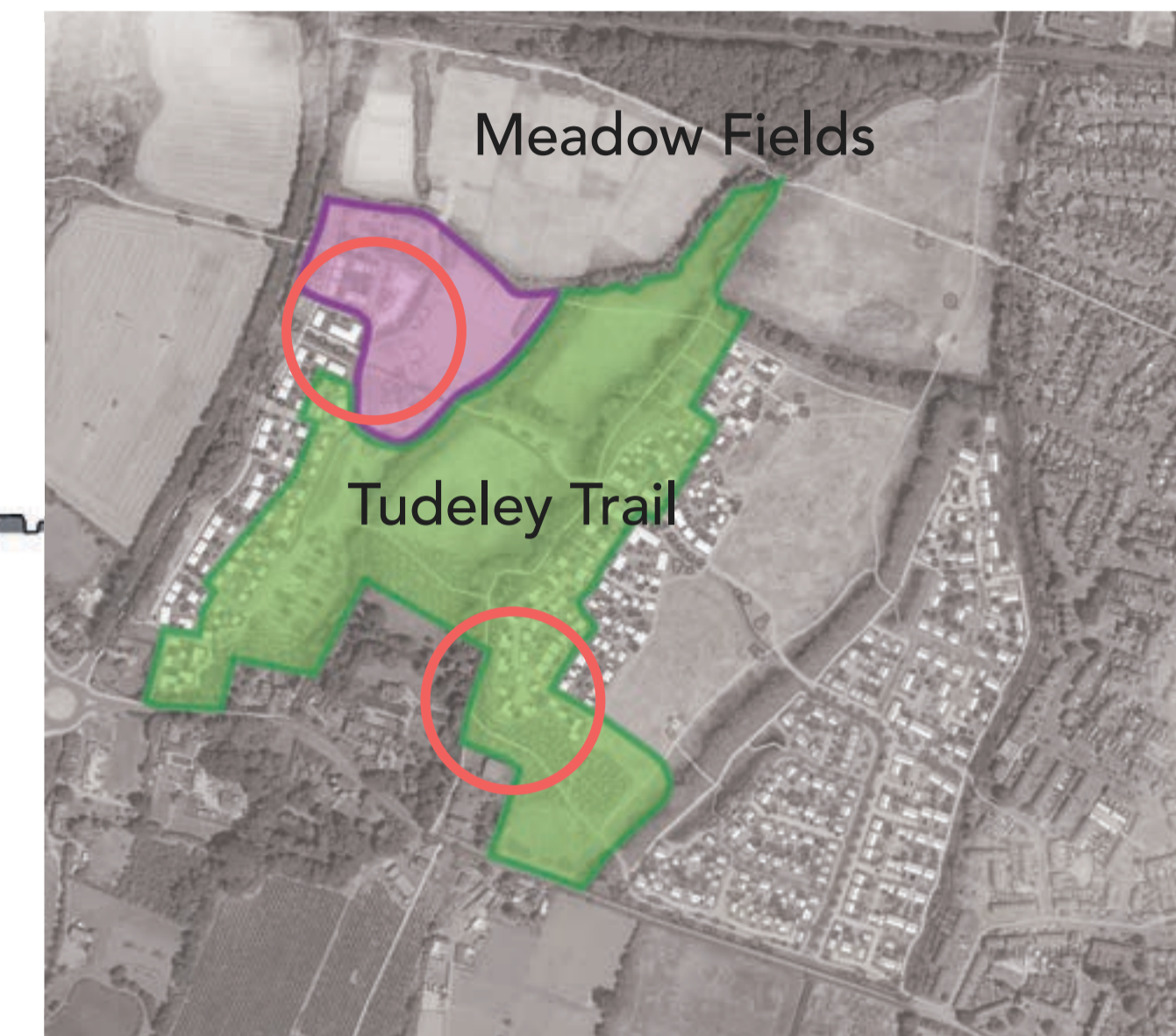
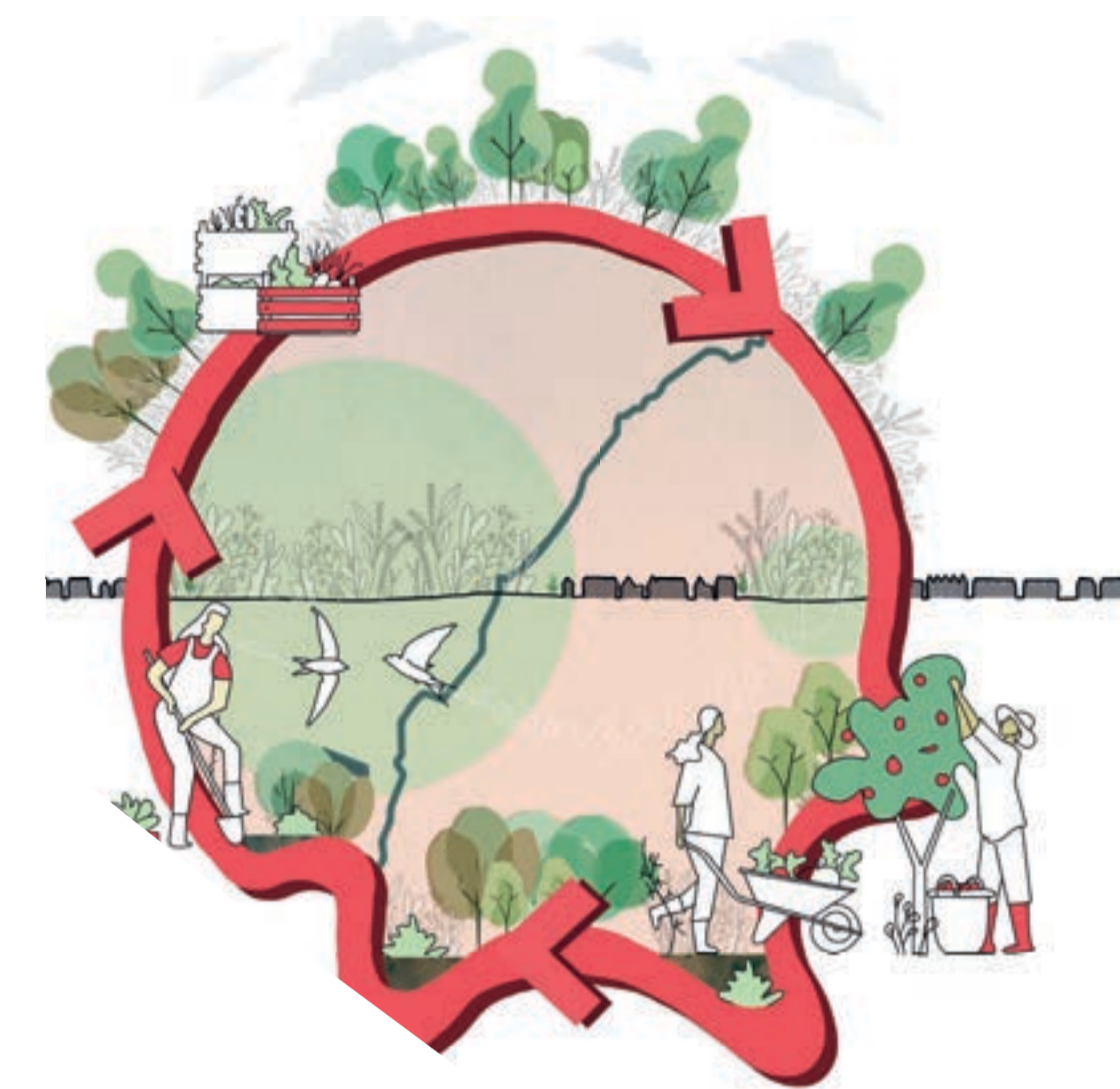




Growing produce and community cohesion



Orchards and informal paths
respond to the heritage
setting of Badsell Manor.

Homes front on to
Tudeley corridor
and PRow.

Low density, farmstead
typologies respond to
Heritage setting.

Informal paths
leading to existing
PRow.

Farmstead cluster with
central vehicular access
leaving development edges
softer and vehicle-free.

Tudeley Trail

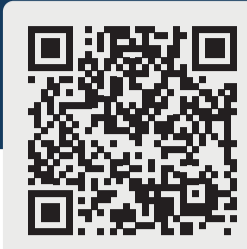
Informal paths integrate
with play opportunities
along the landscaped
western edge of the site.

Homes enclose and
activate the western
approach from
Maidstone Road.

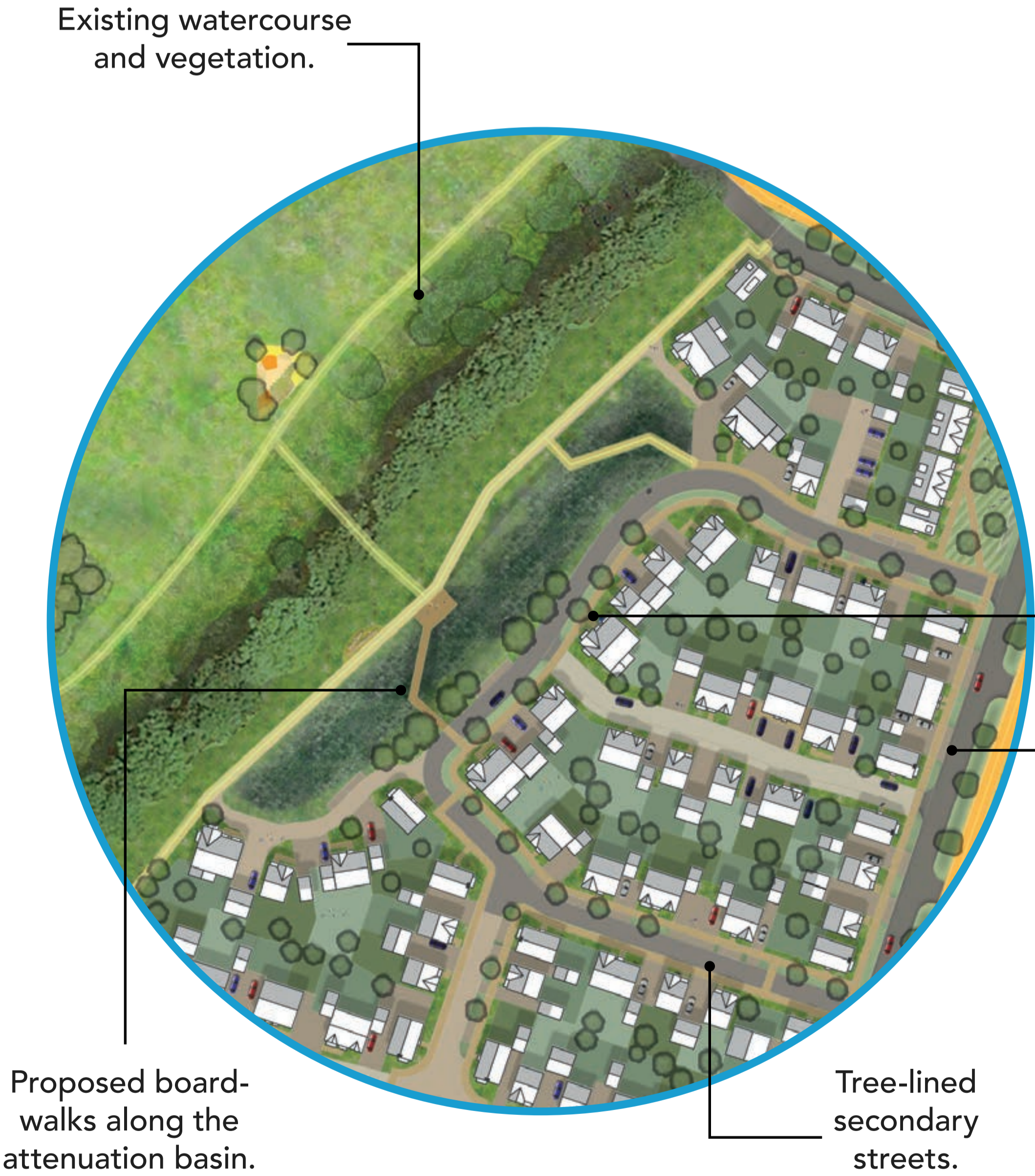
Health and wellbeing
hub – community
healthcare facility
co-located with sports
provision.

Youth play area in close
proximity to sports
provision and the network
of informal footpaths.

Meadow Fields



Embracing nature



Existing watercourse
and vegetation.

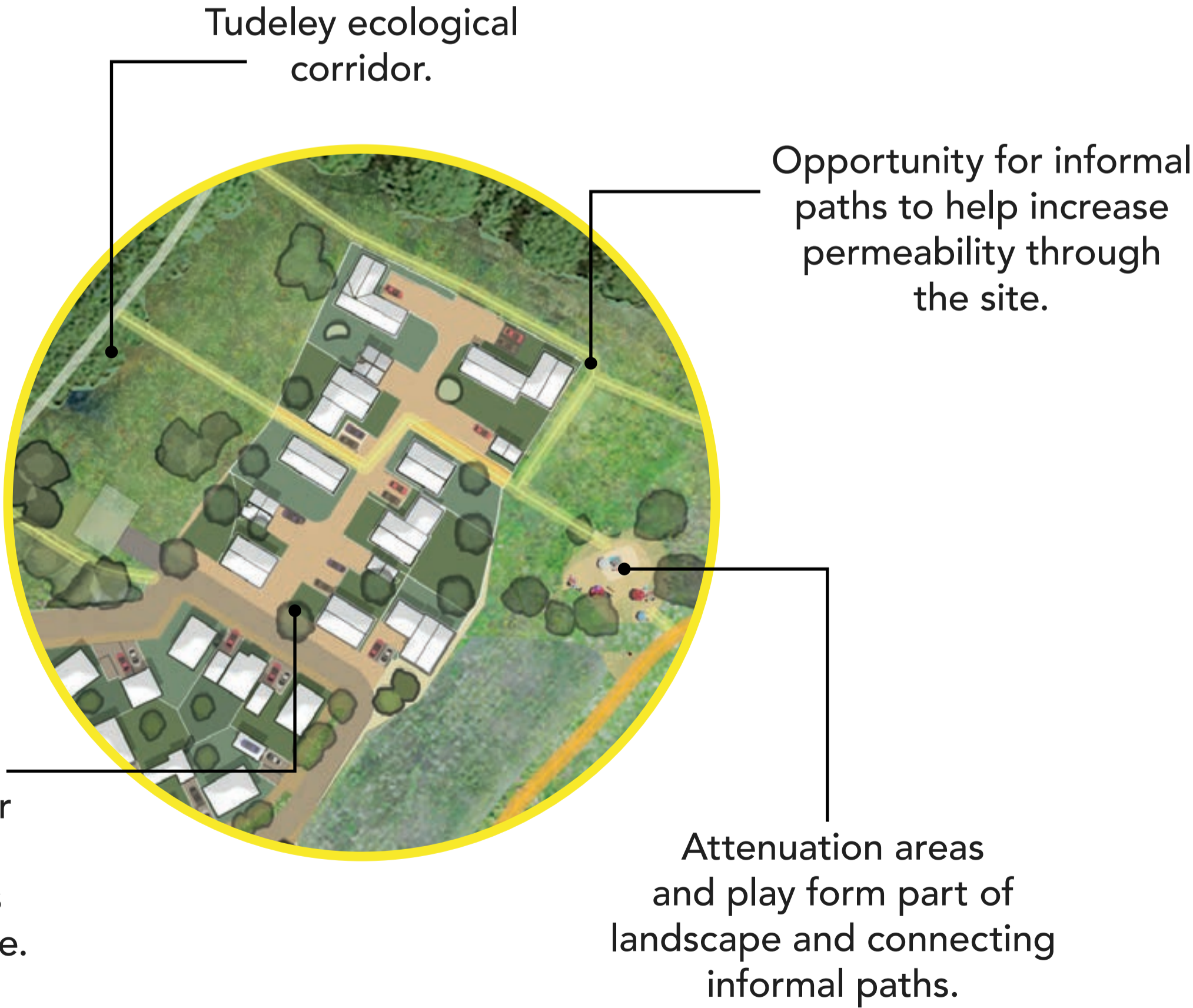
Proposed board-
walks along the
attenuation basin.

Tree-lined
secondary
streets.

Homes front on to the
amenity of attenuation
basins with connecting
Boardwalk.

Primary road
corridor.

Boardwalk Views



Tudeley ecological
corridor.

Opportunity for informal
paths to help increase
permeability through
the site.

Farmstead cluster
with central vehicular
access leaving
development edges
softer and vehicle-free.

Attenuation areas
and play form part of
landscape and connecting
informal paths.

Whetsted Meadow



Active and healthy living

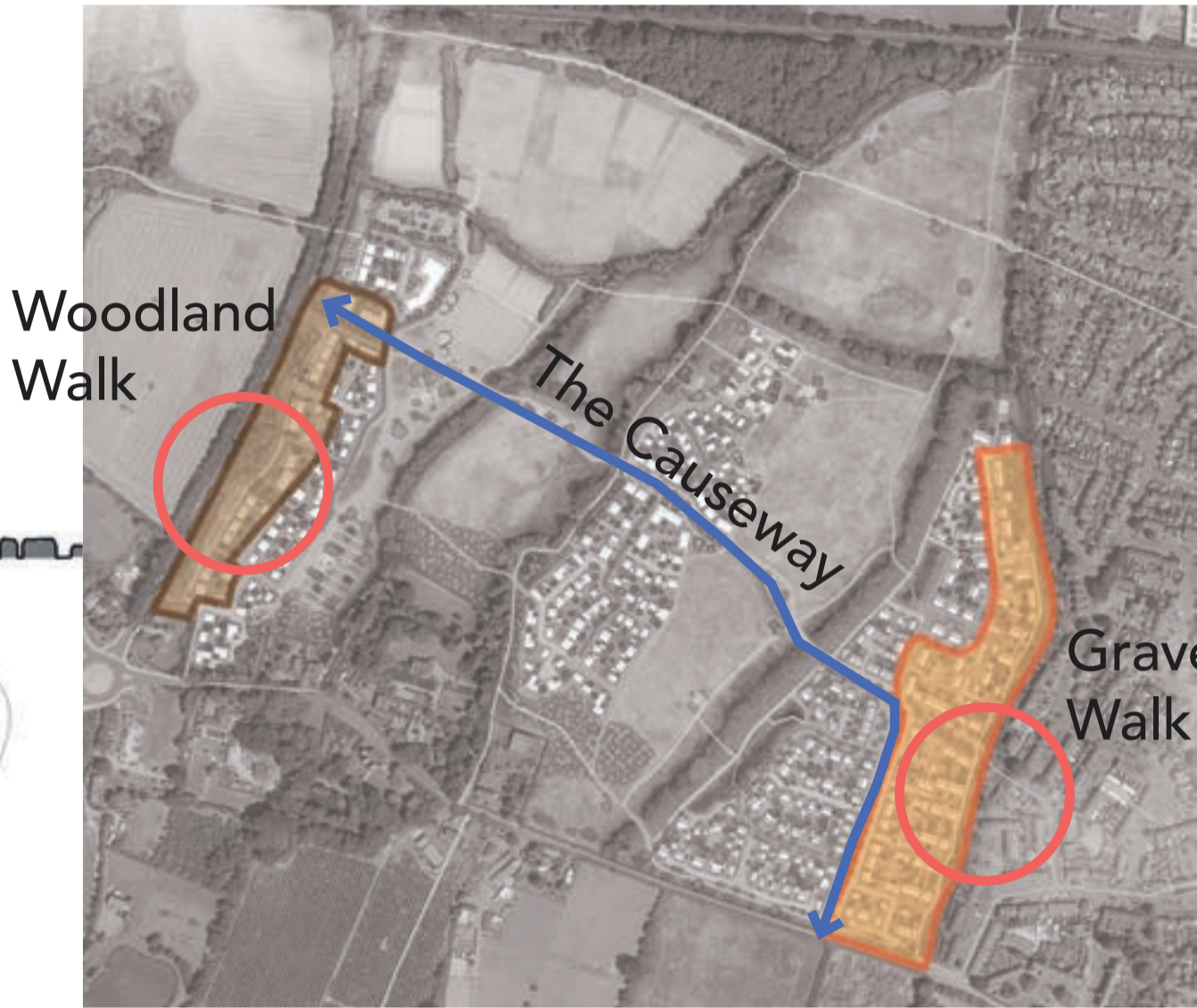
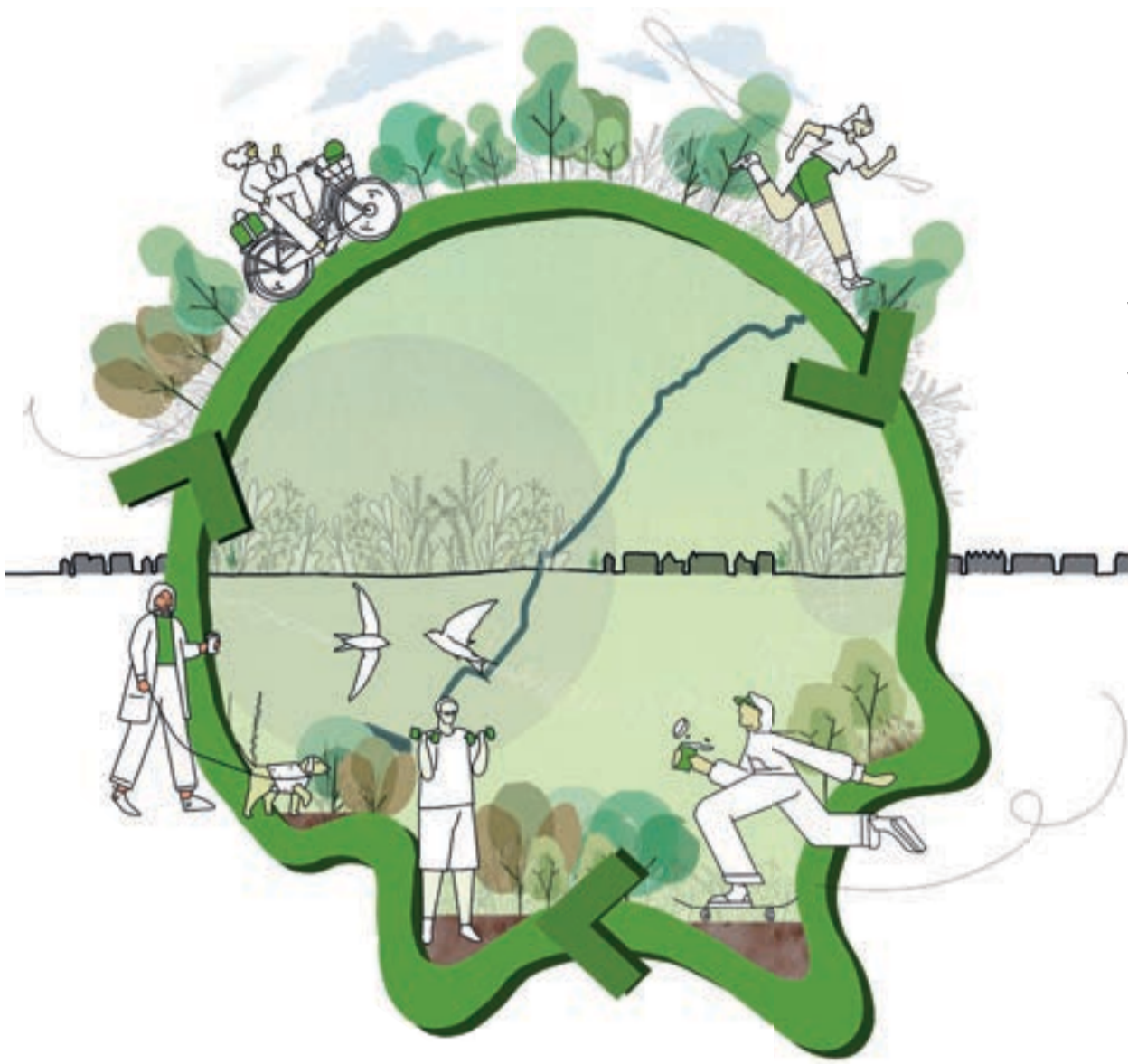
Tree-lined landscaped western edge to development.

North-south informal footpath along western edge provides front door access to homes.



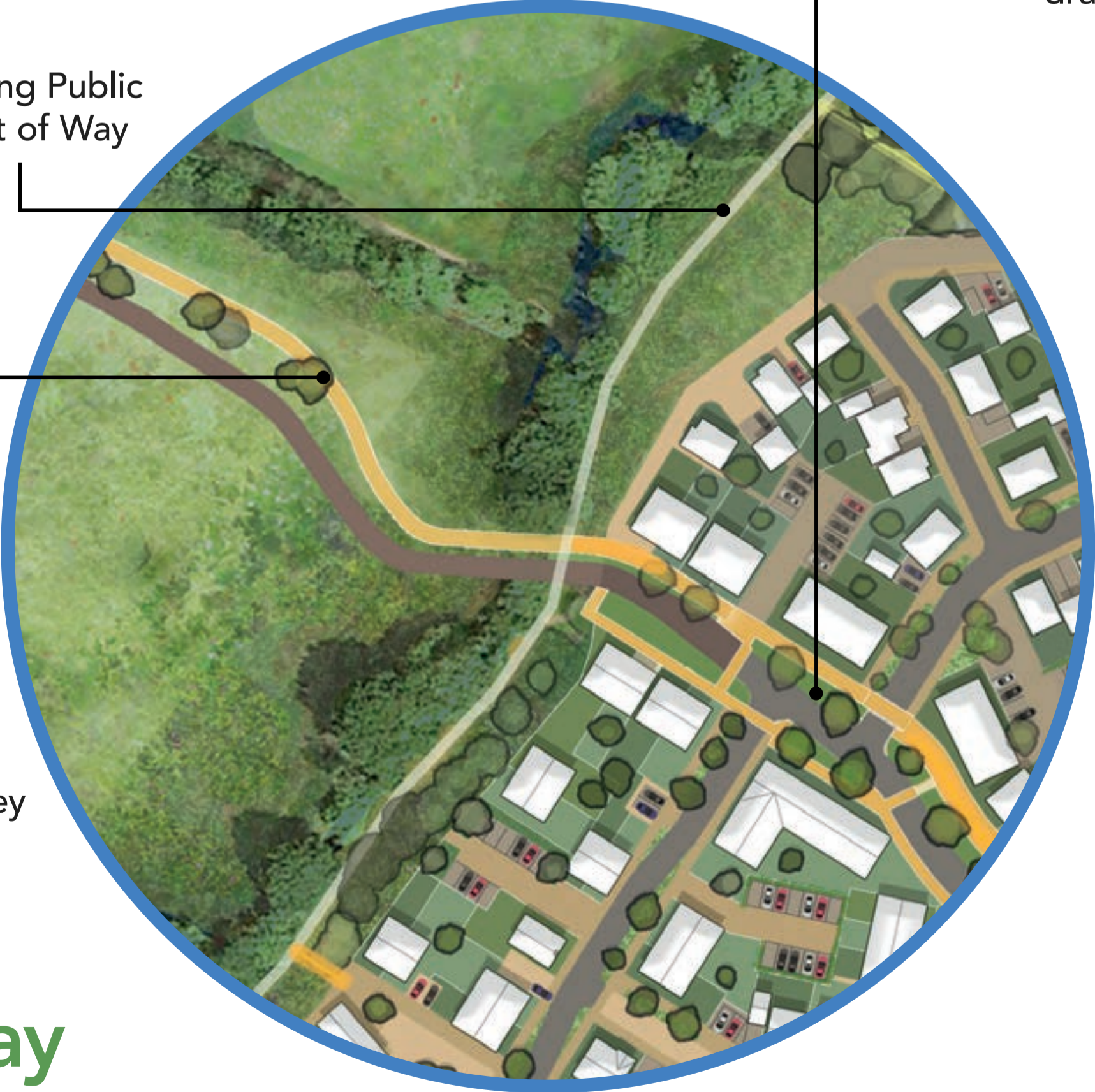
Homes along western landscaped edge provide continuous frontage and passive surveillance.

Woodland Walk



Within the development parcels
The causeway incorporates a sinuous route, wide verges, and segregated active route reflecting the character of neighbouring village main streets.

Existing Public Right of Way



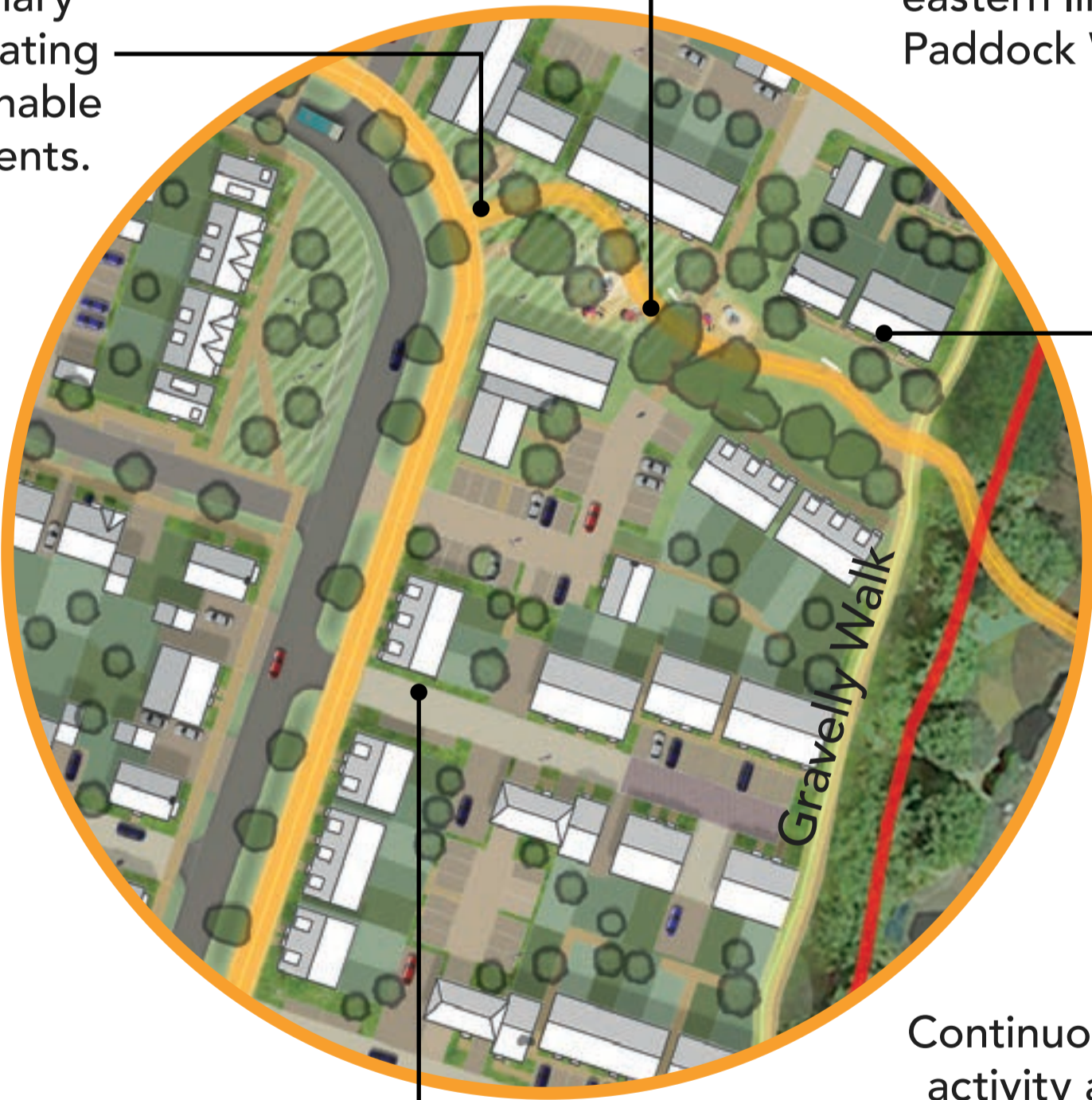
Causeway reduces in width the across Tudeley Brook and associated vegetation.

The Causeway

Gravelly Walk

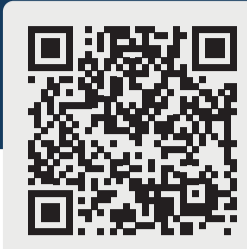
Open space adjoining primary street incorporating play and sustainable drainage elements.

Proposed new eastern link into Paddock Wood.



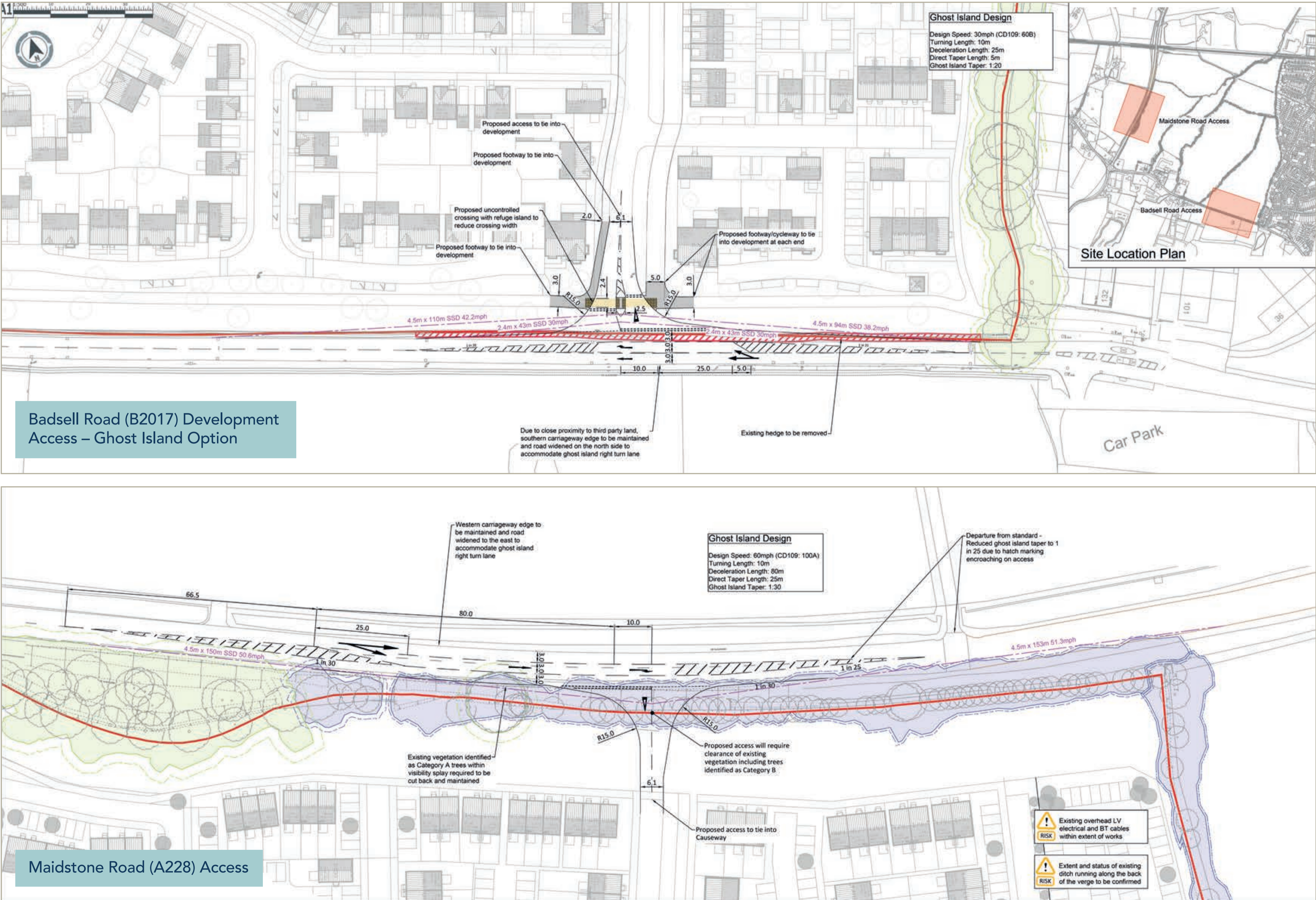
Continuous frontage provides activity and street presence along proposed eastern link into Paddock Wood.

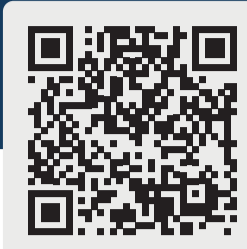
East-west tertiary streets and courts leading to Gravelly Walk.



Proposed access plans

- Key
- Indicative Site Boundary
 - Proposed Channel/Kerbline
 - Proposed Tactile Paving (Buff, Corduroy)
 - Proposed Road Marking (White)
 - Visibility Splays/SSD
 - Proposed Footway
 - Proposed Surface Treatment (Buff)
 - Category A Trees
 - Category B Trees
 - Category A RPA
 - Category B RPA
 - Existing Hedge to be Removed





Landscape and planting

What’s most important to you when it comes to the local environment and landscape?

Add a sticker to the table opposite.

- High priority
- Medium priority
- Low priority

Send us a postcard

Tell us about your favourite local spots to get outside and enjoy nature and why they matter to you.

Take a postcard and either draw or write about the spaces you enjoy and times you have felt connected to nature.

Don’t forget to post it in the box!

Creating new homes and habitats for local wildlife		
Protecting and improving biodiversity		
New planting of trees and hedgerows		
Green walking and cycling paths and trails		
Creating spaces where people can play and relax in nature		
Opportunities to grow food in allotments		
Play areas for all ages		